

Pedestrian Safety for Northwest Oakland children

Community Meeting

Wed. August 24, 2016



Who is Impacted?

- **Oakland School Children Who Attend:**
 - Glenview @ Santa Fe Elementary
 - Anna Yates Elementary in Emeryville
 - North Oakland Community Charter School
 - Oakland Military Institute
 - Sankofa Academy
 - Emerson Elementary
- **Residents, including senior citizens**
- **Drivers and Bicyclists** who traverse our greater zone area to and from Oakland, Emeryville and Berkeley or within our three communities.

Today's Goals

- Identify new safety measures and their install schedules in the next few weeks.
- Identify a contact to keep us informed on the status of the Dept of Transportation's progress and delays on the outlined projects.
- Create Transform's Safe Routes to School partnership with the City and our community.

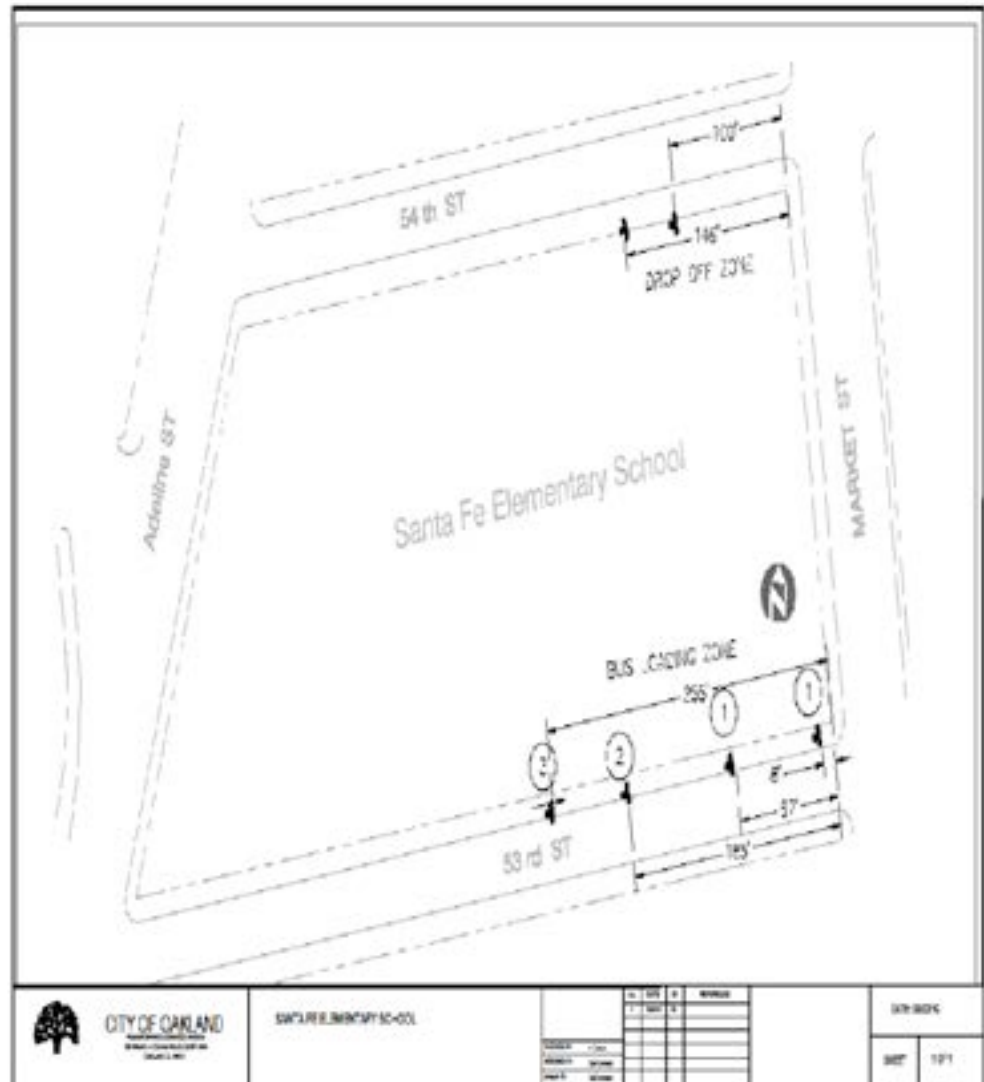
Aug 17, 2016 Adeline at 47th Street, Emeryville

This incident drives home the fact that there are many pedestrian, bicycle and car safety violations that residents and seniors must face.

Students and their parents are also affected when travelling to and from the six local elementary schools.



Date: 08/03/16



Issues and Solutions

Conflicting Signage on 53rd Street

The last portable.



Kindergarten playground



Conflicting Signage on 53rd Street

This sign sits between the two signs on the previous slide.

This sign implies that the entire street is reserved for school buses.



Conflicting Curb Paint - 53rd Street

A fraction of the area between signs is painted.



No curb paint, but buses load and unload here.



54th Street – Poor Signage

Placement: front of the school.

The boundaries are unclear as there is no other sign indicating such and the curbs are only painted in front of the school.

If you park half a block down or at the end of the block this sign is impossible to see due to trees planted curbside.



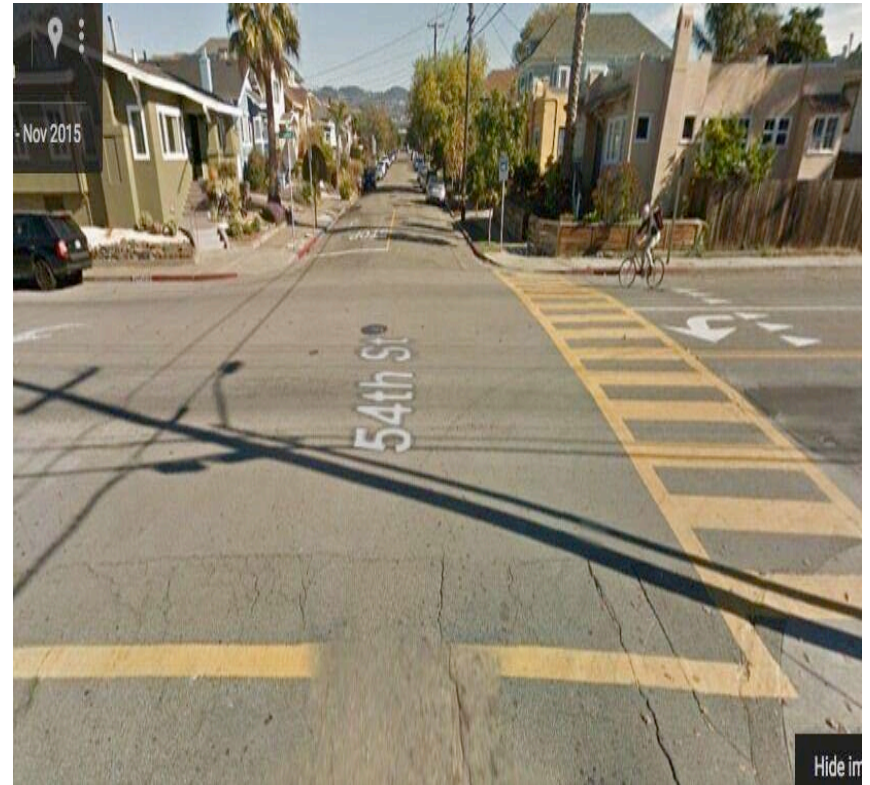
Market Street – 53rd to 54th

There are “No Parking” signs which have conflicting times.

Stopped Car Blocking Intersection

Intersection Stencil Needed:
"KEEP INTERSECTION CLEAR".

Crossing guard(s) needed.



Market and 53rd Streets - Northbound



- Trim tree branches: Stop sign obscured.
- Flashing lights are timed to turn off at 3:30 pm. Aftercare ends at 6:00 pm.
- Deter stop sign runners: Flashing red lights should be operable 24/7 .
- Overhead flashing light should be installed for southbound traffic.

Market at 53rd

Southbound

- Trim tree branches.
- Install overhead flashing light to compliment the one on opposite side.
- Residents confirm a number of accidents have occurred at this intersection because you can't see



Market at 53rd

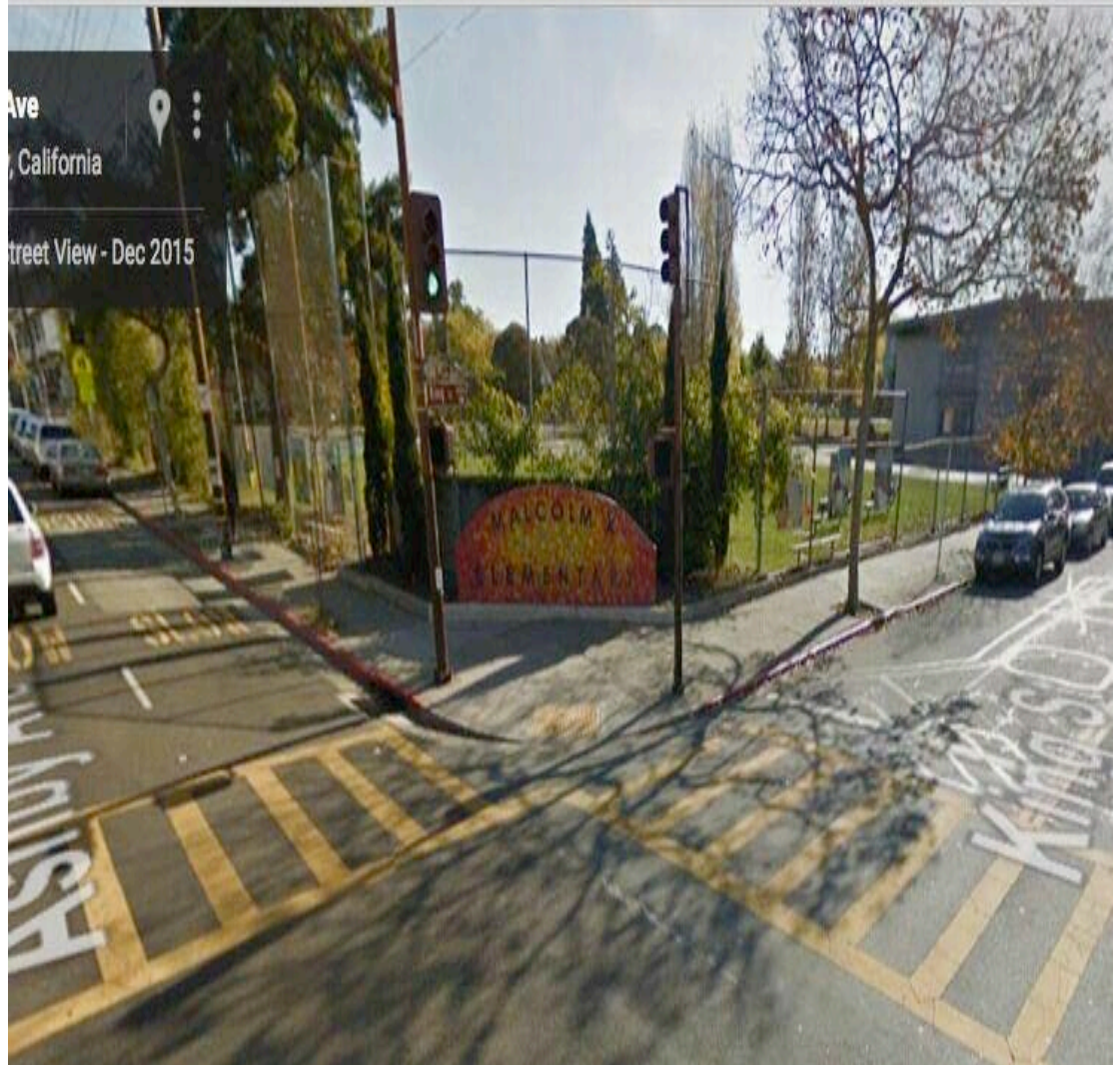
U n p r o t e c t e d
Kindergarten playground.

C h a i n l i n k f e n c e
insufficient to stop cars
from crashing through
fencing.



Fencing Safety Measures

Malcolm X School in Berkeley illustrates safety measures to avoid collision onto school playground.



Adeline at 54th Streets Southbound

Cars routinely run marked
stop sign.



Adeline at 54th Street

Solution

MOVE STOP SIGNS
INTO STREET AT
MORE VISIBLE
LOCATIONS HERE



1) Add crosswalk to north side of intersection and upgrade both this and south crosswalk to high viz ladder markings

2) Stripe dashed center line and bike lane lines through the intersection

3) Stripe painted buffer along red curb space and an advance stop line ahead of each crosswalk

4) Add flex posts or other bollards along outside edge of buffer ahead of each crosswalk

Market at 42nd Street

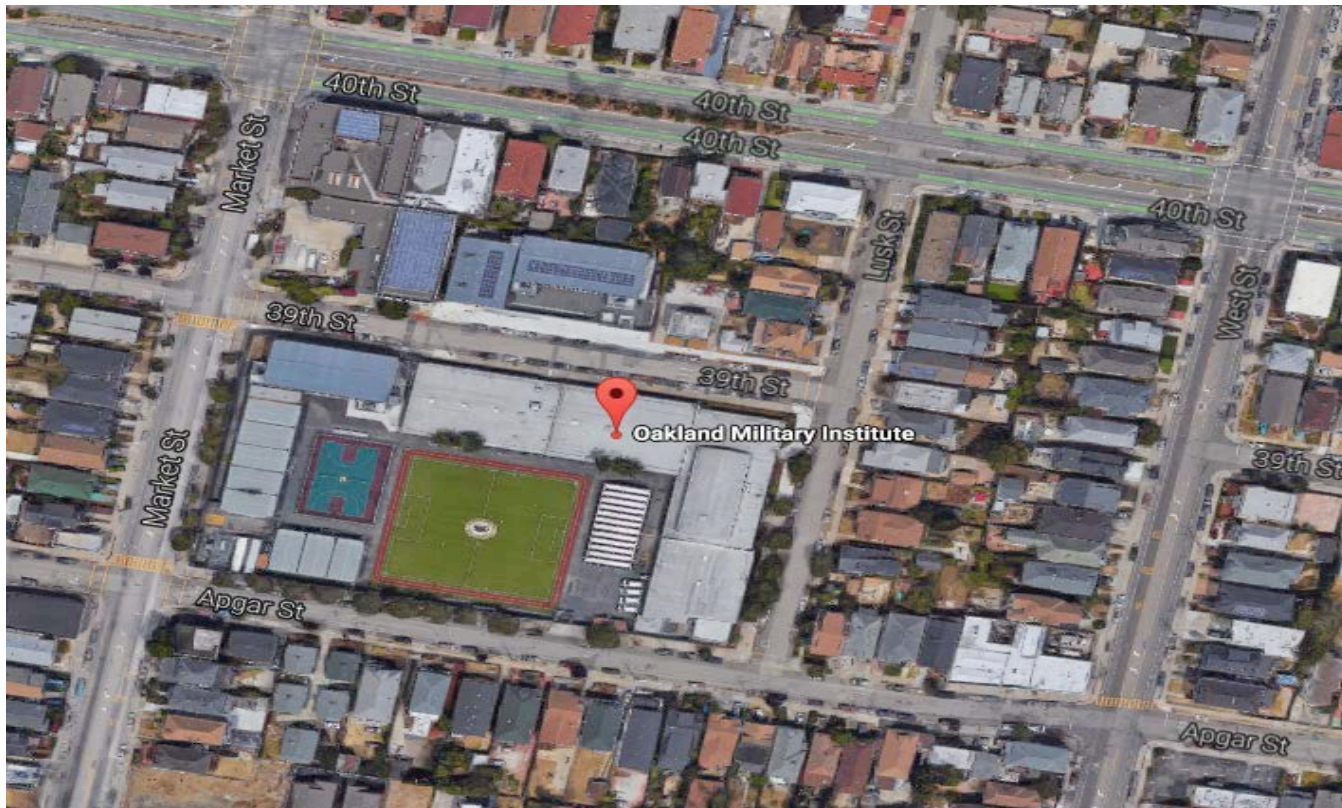
- A crosswalk is needed across Market on the northern part of intersection.
- Kids, including students from North Oakland Charter School, constantly cross on the side that has no crosswalk.



Oakland Military Institute

West Street

- Traffic calming measures are needed on West Street.
- Short term : Install flashing beacons and crosswalk bulb outs.
- Long term: Implement a road diet.



School Route Safety Hazards - Lowell St





Crosswalks with shark teeth needed

Crosswalks with shark teeth

Crosswalks needed

Crosswalks needed

4-way STOP needed and "Keep Clear" signage for intersection

STOP ignored. Intersection upgrade needed. Crosswalks with shark teeth needed

Security Barriers needed

Crosswalk ends in dirt. ADA compliant sidewalk needed

No Parking signs show different times

School Bus Zone needs repainting

STOP sign ignored

Cut Tree branches obscuring northbound STOP sign

Flashing lights for northbound traffic needs to work 24x7. Flashing light needed for southbound traffic

Security Barriers needed

Google

Acknowledgements

- Councilmember Dan Kalb, District 1.
- Megan Low, Chair, Santa Fe CAN Education Committee
- Kirstyn Russell, Golden Gate parent
- Chelsea Toller, Principal, Glenview at Santa Fe.
- Wladimir Wlassowsky and Peter Chun, Transportation Services
- Sergeant Antonio Fregoso, Oakland Schools Police for providing officers for additional security during the first few days of school
- Olga Bolotina, Chief of Staff for Councilmember Dan Kalb
- The Santa Fe, Golden Gate, Longfellow, and Glenview communities
- Santa Fe CAN and the GGCA for providing food and beverages.